

## **Comparative Profile**

### Rhode Island State Council on the Arts Funding and Grant Making

Prepared by the National Assembly of State Arts Agencies  
July 2012

## **Introduction**

The following report provides a brief statistical overview of Rhode Island State Arts Council grant-making for fiscal year 2011 (the most recent year for which data are available) and legislative appropriations to the agency, both current and historical. Legislative appropriation data includes trends for Rhode Island from 1990 to 2012, appropriation trends adjusted for inflation, per capita revenue rankings and comparisons to other states in the region. Grants data includes maps of grant locations, comparisons of regional and intrastate grants, grant activities breakouts and arts education grant statistics.

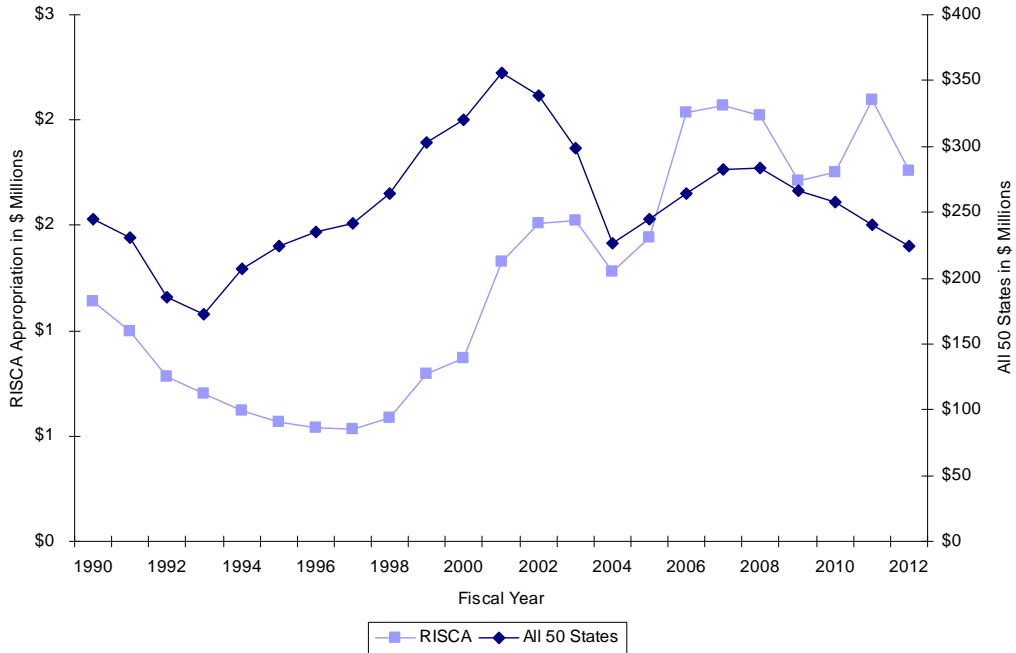
## **Data Sources**

All appropriation statistics in this profile are drawn from legislative appropriations and revenue surveys submitted twice annually to NASAA. Figures reflect appropriations to each state agency for both programs and operations. To facilitate comparability, appropriations figures exclude line item funding (dollars designated by the legislature to pass through the state arts agency's budget to specific organizations). Federal funds, state transfer funds and other sources of revenue are also excluded. For further information on budget details and nuances between states, please see NASAA's [state budget center](#).

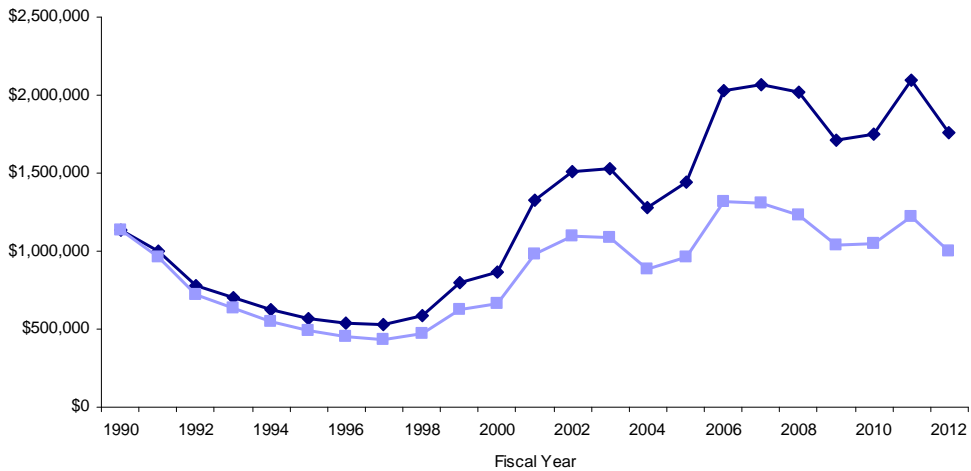
Grant-making statistics in this profile are drawn from Final descriptive Reports (FDRs) as submitted annually to the National Endowment for the Arts (NEA) and NASAA. Information is drawn from the most recent data available from each state. FDRs uses a uniform set of terms and definitions to facilitate comparisons between states. All records are required by the NEA to reflect the locations of award transactions, which may differ from the location of project activities. For further information on state arts agency grant programs consult the [grant making](#) section of NASAA's website.

# Rhode Island State Council on the Arts Historic Legislative Appropriations

**Agency Legislative Appropriations  
Rhode Island and the Nation  
Excluding Line Items 1990 - 2012**



**Rhode Island State Council on the Arts  
Agency Appropriations Excluding Line Items  
Annual and Inflation-Adjusted Dollars  
Fiscal Years 1990-2012**



Although nominal appropriations to RISCAs have increased over a twenty year period, the above chart shows, that after adjusting for inflation, the buying power of the agency remains at nearly the same level as the 1990 appropriation.

**Rhode Island State Council on the Arts**  
**Agency Appropriations Excluding Line Items**  
**Per Capita**  
 Fiscal Years 1990-2012

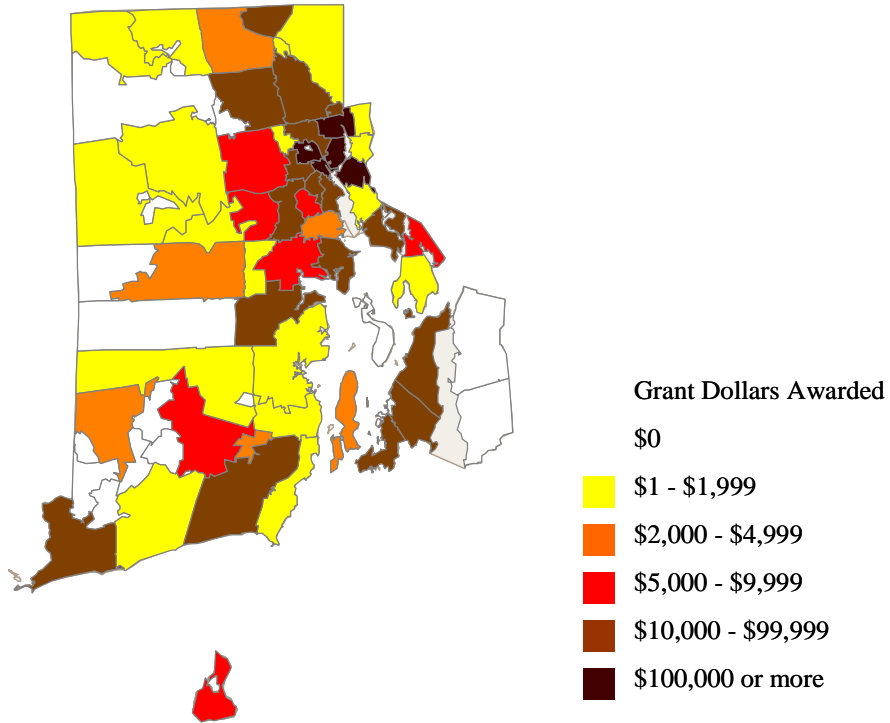
Fiscal Year	Agency Appropriation	Per Capita Spending	Per Capita Rank
1990	\$1,135,552	\$1.13	7
1991	\$997,732	\$0.99	12
1992	\$778,518	\$0.78	18
1993	\$702,016	\$0.70	18
1994	\$620,592	\$0.62	27
1995	\$567,541	\$0.57	28
1996	\$539,139	\$0.55	30
1997	\$532,497	\$0.54	33
1998	\$587,164	\$0.59	33
1999	\$796,755	\$0.81	23
2000	\$868,353	\$0.88	25
2001	\$1,327,854	\$1.26	11
2002	\$1,507,317	\$1.42	10
2003	\$1,525,232	\$1.43	9
2004	\$1,278,018	\$1.19	7
2005	\$1,443,542	\$1.34	7
2006	\$2,033,558	\$1.89	6
2007	\$2,068,740	\$1.94	6
2008	\$2,023,736	\$1.92	7
2009	\$1,710,071	\$1.63	9
2010	\$1,752,192	\$1.66	8
2011	\$2,097,140	\$1.99	6
2012	\$1,758,044	\$1.67	8

**FY12 New England States Comparisons**

State	Population	FY 2012 Agency Appropriations Excluding Line Items			Five Year Appropriation Change
		Appropriation	Per Capita \$	Per Capita Ranking	
Connecticut	3,518,288	\$4,347,552	\$1.24	11	-25%
Maine	1,318,301	\$688,593	\$0.52	30	-13%
Massachusetts	6,593,587	\$9,199,866	\$1.40	9	-25%
New Hampshire	1,324,575	\$354,871	\$0.27	42	-58%
Rhode Island	1,053,209	\$1,758,044	\$1.67	8	-13%
Vermont	621,760	\$507,607	\$0.82	19	-7%

## Rhode Island State Council on the Arts Grant Making

### Grant Dollars Awarded by Zip Code Rhode Island State Council on the Arts, FY 2011



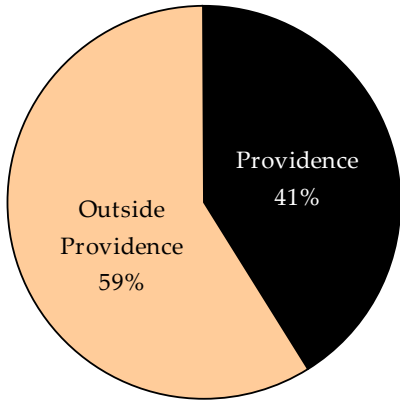
### Comparative Grant Details, FY 2011

State	No. of Grants	Grant Dollars	Median Grant Size
Connecticut	533	\$3,884,461	\$2,939
Delaware	173	\$1,765,929	\$3,100
Maine	167	\$723,063	\$1,500
Massachusetts	1,649	\$8,078,225	\$2,500
New Hampshire	170	\$795,328	\$3,400
<b>Rhode Island</b>	<b>396</b>	<b>\$1,746,895</b>	<b>\$1,500</b>
Vermont	211	\$785,128	\$2,000

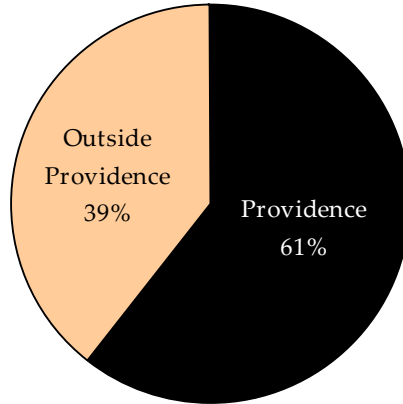
Delaware has been added to foster comparison with another geographically small state.

**Distribution of Grants and Grant Dollars  
Providence and Outside Providence  
FY 2011**

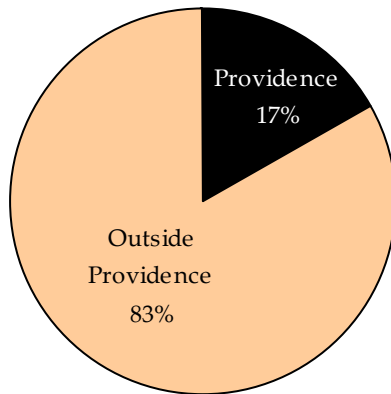
**Number of Grants**



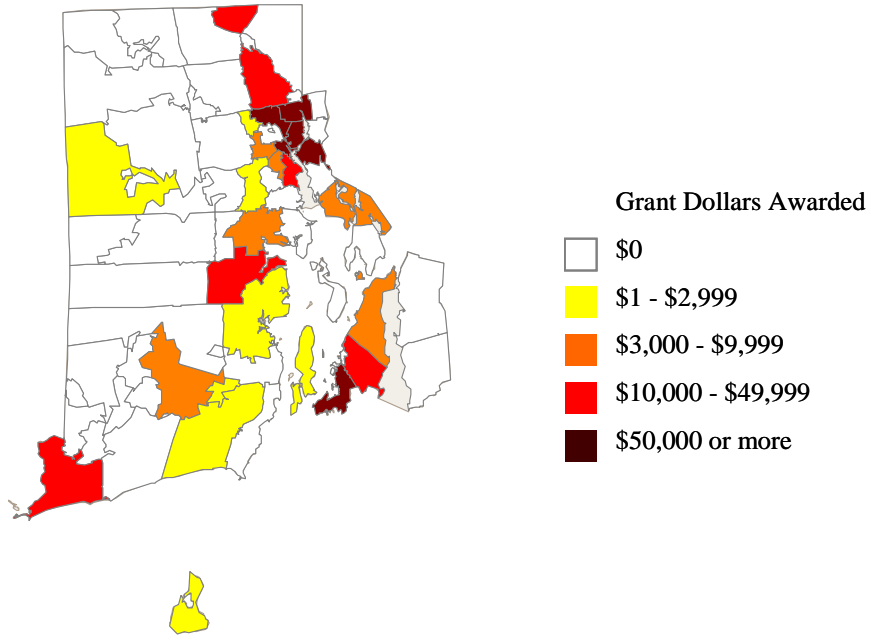
**Grant Dollars**



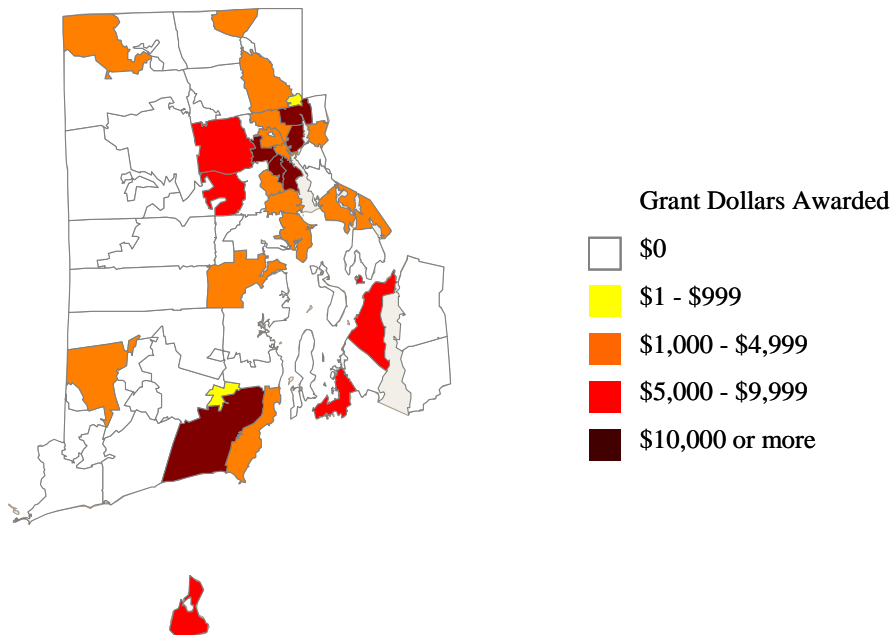
**State Population, 2010**



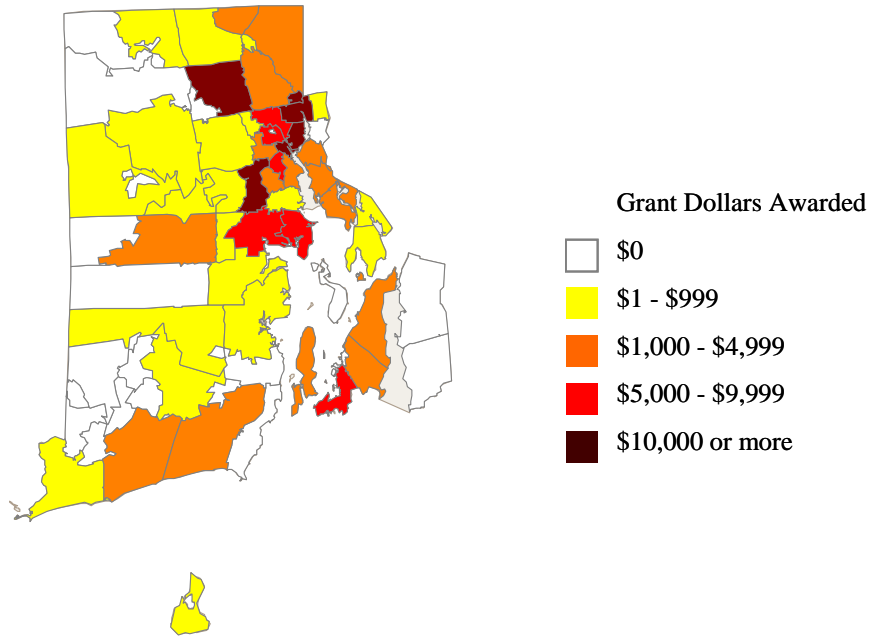
**Grants to Arts Organizations by Zip Code**  
Rhode Island State Council on the Arts, Fiscal Year 2011



**Grants to Individual Artists by Zip Code**  
Rhode Island State Council on the Arts, FY 2011

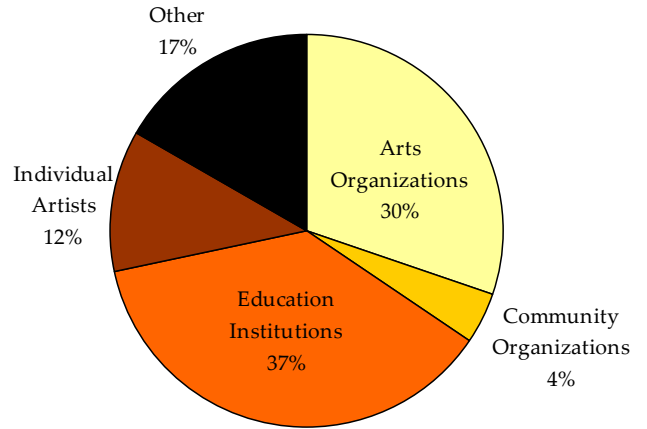


## Grants to Community Groups & Schools by Zip Code Rhode Island State Council on the Arts, FY 2011

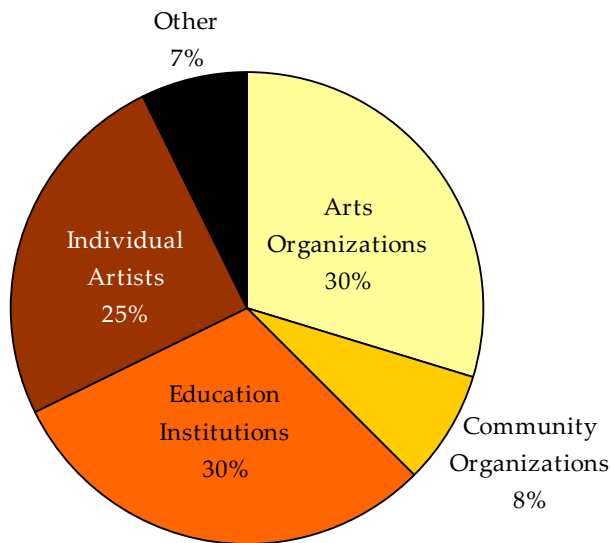




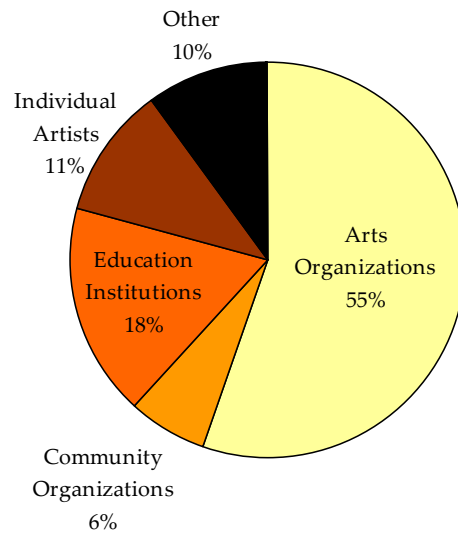
**New England States Grantee Types, FY 2011**



**Rhode Island Grantee Types, FY 2011**



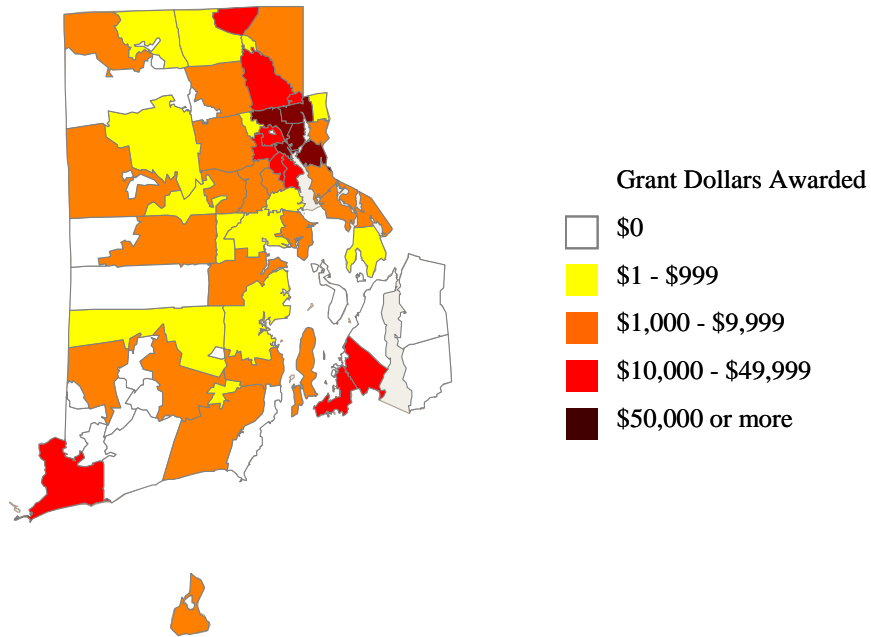
**All SAAs Grantee Types, FY 2011**



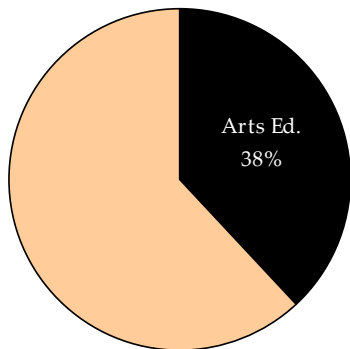
“Other” includes print media, government agencies, health facilities, correctional institutions, etc.

## Arts Education Grants by Zip Code

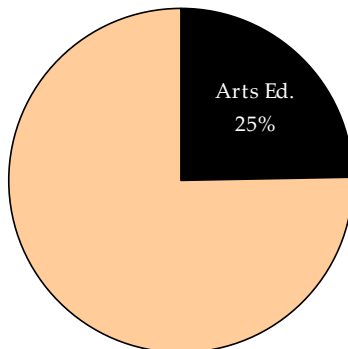
### Rhode Island State Council on the Arts FY2011



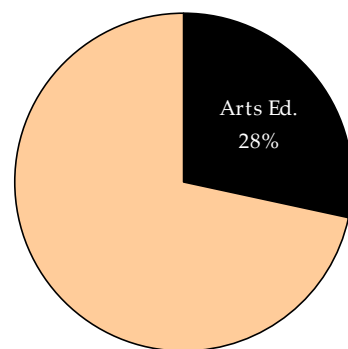
**Rhode Island**



**New England States**



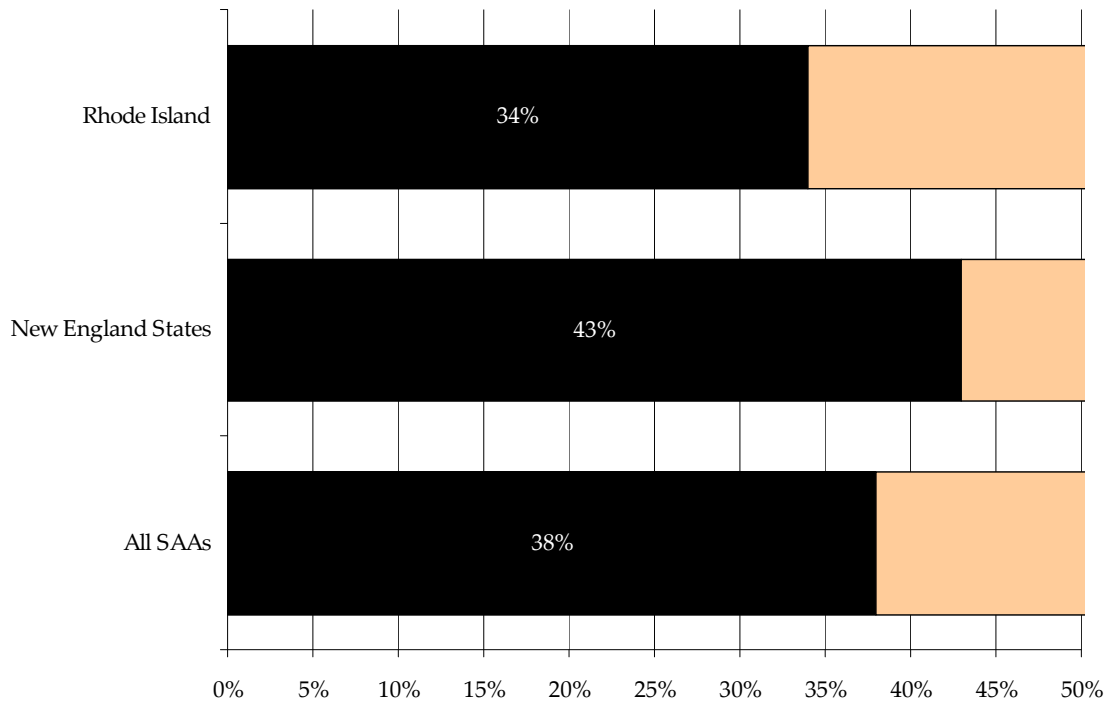
**All SAAs**



### Rhode Island Operating and Administrative Support Grants. FY 2011

No. of O/A grant awards	23
Percent of all awards	6%
O/A grant dollars	\$592,555
Percent of all dollars	34%
Minimum O/A award size	\$500
Median O/A award size	\$14,427
Maximum O/A award size	\$108,804

### Operating and Administrative Support Grants, FY 2011



## Operating and Administrative Support Grants, FY 2011

### New England States

State	Minimum O/A Award	Median O/A Award	Maximum O/A Award
Connecticut	\$327	\$6,719	\$64,901
Delaware	\$740	\$5,040	\$99,960
Maine	\$0	\$0	\$0
Massachusetts	\$2,500	\$4,800	\$50,000
New Hampshire	\$440	\$10,050	\$22,500
<b>Rhode Island</b>	<b>\$500</b>	<b>\$14,427</b>	<b>\$108,804</b>
Vermont	\$500	\$7,000	\$7,000
All SAAs	\$37	\$7,500	\$1,658,129